

## Organisation Profile



**SURYYA**  
GLOBAL SOLUTION

**SURYYA GLOBAL SOLUTION**

**WE WORK 4<sup>TH</sup> FLOOR AMANORA CREST**

**AMANORA PARK TOWN HADAPSAR PUNE- 411028**

**MAHARASHTRA INDIA**

EMAIL : [suryyaglslu@outlook.com](mailto:suryyaglslu@outlook.com)

CTC- 8850272854

## Organisation at a Glance

- Registered in **OCT 2024** in the name of Suryya Global Solution moved into Solar project Development & EPC Business.
- Led by Arvind Tripathi, having professionally rich background in Financial Services & Renewable Energy, the organization is upbeat about role of Renewable Energy in India's Growth to Future & commits itself for an impactful contribution to society
- We have a project management team of 5 Engineers & Managers who jointly possess experience of 5 MW+ Solar Projects. There is a 10+ member associate team to execute & support in project developments
- Suryya Global Solution team has already developed & commissioned **60+ Grid Tie & Hybrid Projects** in starting from 5 KW to 1 MW sizes
- Organisation is very focused on creating stakeholders for a lifetime, and Highest Quality of Project delivery is our forte.

## Our Services

### Solar Plants

- **Integrated Solar Energy Solutions for Residential / Industrial / Commercial customers**
- **Complete inhouse team & activities for Project Development, Maintenance & Finance**
- **We develop OnGrid / Hybrid / Off grid Solutions ranging from 5 KW to 1 MW**



## What makes us Different ?

- Unbiased valuation & feasibility study, Friendly guidance & support for making **Solar Energy available at AFFORDABLE cost with highest quality of project inputs & post-commissioning services**
- Commitment towards highest standards of Project performance & Safety aspects
- Services by qualified & highly skilled team
- Comprehensive maintenance offers for longer durations to build customer confidence (upto 10 years maintenance contract for larger projects)
- Making Finance Options available (with lesser / No upfront investment) in medium – large residential projects, helping customers adopt green energy faster

## Key Projects (Non-Residential)

**Suryya Global team has rendered services to 60 + customers & completed Solar Plant projects of >5 MW combined capacity. The core team possess overall experience of executing more than 3 MW projects.**

Some of our leading projects non-residential projects are –

- 360 KW Grid Tie Solar plant at work at industrial unit, MIDC Nashik
- 140 KW Grid Tie Solar Plant EPC work at Industrial unit at Taloja MIDC
- 135 KW Grid Tie Solar Plant EPC work at Industrial unit at Taloja MIDC
- 100 KW Grid Tie Solar Plant EPC work at Industrial unit at Taloja MIDC
- 45 KW Grid Tie Solar Plant at work, Spiritual Organisation (Trust), Vashi
- 20 KW hybrid + 40 KW ongrid solar plant at NGO, panvel
- 30 KW Hybrid solar plant EPC work at Commercial Unit, Panvel
- 25 KW ongrid solar plant at Educational institution, Taloja
- 25 KW ongrid solar plant at Educational institution, Taloja
- 25 KW ongrid solar plant at NGO, Badlapur

Other major projects executed by our team (as channel partner for I&C works) are –

- 1 MW Grid Tie at work at Govt Organisation, Navi Mumbai
- 1.2 MW Grid Tie Solar Plant at work, Indian Navy, Goa
- 500 KW Grid Tie at work at Industrial Unit, Indore, MP
- 160 KW Grid Tie Solar Plant at work, Commercial Unit in Mumbai

# Key Projects (Residential)

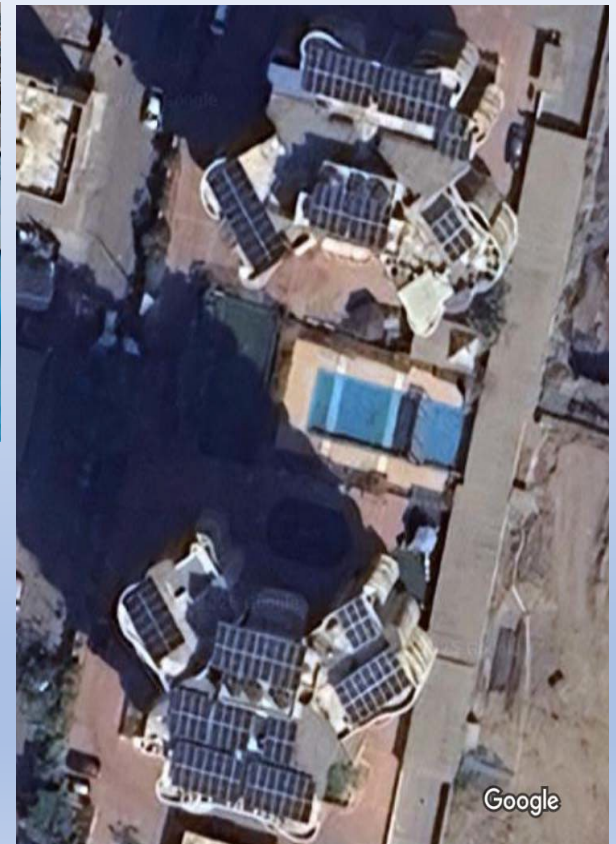
Suryya Global team has served to 35+ Residential customers to build Solar Plants (mostly Housing societies). Some of the key projects are

COMMISSIONED PROJECTS	ONGOING PROJECTS
95 KW Grid Tie Solar plant at Housing Society, Sector 35, Kharghar	75 KW Grid Tie Solar plant at Housing Society, Taloja Phase 2
75 KW Grid Tie Solar plant at Housing Society, Neral, Karjat	75 KW Grid Tie Solar plant at Housing Society, Belapur
65 KW Grid Tie Solar plant at Housing Society, Sector 12 Kharghar	45 KW Grid Tie Solar plant at Housing Society, Kamothe
60 KW Grid Tie Solar plant at Housing Society, Sector 19, Kharghar	40 KW Grid Tie Solar plant at Housing Society, Sector 20, Kharghar
55 KW Grid Tie Solar plant at Housing Society, Taloja Phase 2	30 KW Grid Tie Solar plant at Housing Society, Khandeswar
36 KW Grid Tie Solar plant at Housing Society, Kamothe	25 KW Grid Tie Solar plant at Housing Society, Sanpada
35 KW Grid Tie Solar plant at Housing Society, Kamothe	20 KW Grid Tie Solar plant at Housing Society, Sec 35, Kharghar
33 KW Grid Tie Solar plant at Housing Society, Sector 20, Kharghar	
30 KW Hybrid Solar plant at Housing Society, Navde Taloja	
25 KW Grid Tie Solar plant at Housing Society, Sec 20, Kharghar	
21 KW Grid Tie Solar plant at Housing Society, Nerul	
21 KW Grid Tie Solar plant at Individual Bungalow, Thane	

## Some Industrial project Photographs



## Some Residential project photographs



# LEASE MODEL for HOUSING SOCIETIES

KEY FEATURES	
Target Customers	Housing Societies for their Common Energy expenses (Lift, Pump, office, Lights, club house etc)
Electricity Distributor & Target Area	MSEDCL, Greater Mumbai region
Minimum Size of Solar Plant	15 KW (society having common bill of 25K & above)
Project investment & ownership by	Webtouch Privat Limited (Touch Solar)
Lease Tenure	5 Years
Lease Rate (Rs) / Unit of power Generation	Rs 12.5 - 13 / unit, Typically for 15+ storied buildings with high power consumption
Lease Rate (Rs) / Unit of power Consumption	Rs 14.5-16 / Unit, For societies with upto 20 storied towers
Refundable Security Deposit (Cash Collateral)	15 - 20% of original project cost
Return/Adjustment of Deposit	After 4 years with interest @ 6% per annum
Foreclosure Option	Yes available, after 1 year of operation, as per foreclosure chart
Maintenance during Lease	By Lessor (developer)
Balance ownership of bills	by customer/Developer - Depending on projects
Original Project cost	<b>40000-45000/KW + GST</b> - depending on plant size, type of roof etc
Ownership after Lease period	To be handed over to customer at <b>NIL cost / 5% cost</b> - depending on project size, lease rate etc
Maintenance responsibility after Lease	Customer (society)

Pls note - Lease rate will typically be Rs 2-6/Unit lesser than MSEDCL bill, so that society starts saving 10-30% on electricity bill each month, Virtually with NIL investment & responsibility. Society has the option to reduce bills in first 5 years & then own Solar plant for another 20+ years at NIL cost, wherein electricity will be free as per size of plant – ALL WITHOUT INVESTMENT

## Quality Policy

- **Transparency, Adherence to Commitments, High Standard of Services** – are the core pillars of our organisation
- The company attaches great importance to the continuous improvement in delivery of our services, wherein the primary objective is ***customer satisfaction***
- Management is committed to encourage implementation of new ideas and continuous improvement of quality management
- Provision of good working environment and conditions for all staff to achieve the best performance

**Thank You**



**Contact Details –  
Arvind Tripathi  
Managing Director  
[Suryyaglbslu@outlook.com](mailto:Suryyaglbslu@outlook.com)**